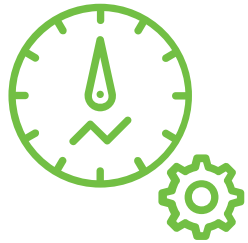
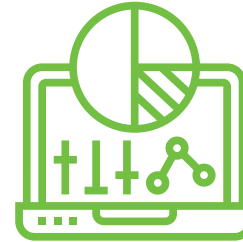


Haul Route Analysis



On site machines can already indicate a high-pressure difference between suspension cylinders, typically caused by:

- Machine fault or need for calibration
- Operators driving too fast for conditions
- Haul road conditions



APM analytics can **identify the cause and isolate area of the circuit that requires attention** such as whether it due to roughness or incorrect corner elevation

Built in GPS mapping also allows your team to quickly identify and improve poor road areas and conditions, leading to:



✓ Faster truck speed on circuit



✓ Safer road conditions



✓ Extended tyre life



✓ More efficient management of haul roads, production and maintenance